



# PACIFIC RESILIENCE MEETING 2021 REPORT





# TABLE OF CONTENTS

04

Executive Summary

05

Pacific Resilience Meeting – Objectives

06

Daily Summary

10

Audience and participation break down

13

Modalities of delivery

14

A/ Virtual platform

16

B/ National hubs & private sector

19

ANNEX 1 – Agenda and access links to replay on PR

24

ANNEX 2 – Outcomes of the 2021 Edition

27

ANNEX 3 – Outcomes of the 2021 Pre-PRM Youth Forum

29

ANNEX 4 – Chair’s Summary

31

ANNEX 5: PRM Organising committee list

32

ANNEX 6: Pacific Resilience Taskforce





# EXECUTIVE SUMMARY

The second Pacific Resilience Meeting was held from 6th to 8th July, 2021 – preceded by a Youth Forum on the 5<sup>th</sup> July, 2021. Due to travel restrictions, the second PRM was hybrid with a virtual online conference platform and national hubs in 11 participating Pacific Island Countries which live-streamed the event and enabled interaction with the virtual platform as well as networking among the participants that utilized the national hubs. It showcased 26 sessions over the four days programme, with more than 150 speakers and 1700 participants. The online platform through its various features enabled interactive discussions and networking including participation by those visually and hearing impaired.

***Mr Engel Raygadas,  
Chair of the Pacific  
Resilience Taskforce,  
(French Polynesia)***

This meeting, which is a key element of the Pacific Resilience Partnership (PRP) governance structure, was designed recognising the principles, goals and actions in the Framework for Resilient Development in the Pacific (FRDP) as reflected through the Pacific Resilience Standards, a tool that seeks to facilitate excellence in resilience development through 4 main pillars of resilience namely Integrate, Inform, Include, Sustain.

In keeping with the intent of the FRDP and PRP that underscores a commitment to ensure that efforts to build resilience must be inclusive and delivered through a multi-stakeholder partnership, a key success in the planning and the delivery of this meeting was the strong commitment of participating partners underscored by a shared and inclusive leadership approach that resulted in a high level of participation. Being the 1st hybrid PRM, the results went beyond expectations in terms of numbers of participants, in-depth of the presentations, engaging and authentic content, as well as interaction amongst participants through the chat, surveys, gallery, expo space on the virtual platform. The online platform organizer reported that attendance throughout the 3 days was very high with 70% login to registered rate, a long way above industry standard and reflects that the PRM remains relevant across the multi-stakeholder grouping. The national hubs expanded coverage and participation including those with connectivity challenges at the participating countries and also provided an opportunity to engage with the private sector through the on-ground logistics. The momentum generated by the inaugural PRM in 2019 including through the Technical Working Groups, Webinar Series and Youth competition have also contributed to the success of the 2021 PRM.

A live illustrator also added value to the content with digital illustrations which are also embedded in this report.

The meeting was themed Our people, Our journey: Nurturing Pacific Resilience from Home to recognise the context of the Covid-19 pandemic and the multifaceted nature of risk, but also to underline the ongoing efforts at the individual and collective level for resilience that builds on the distinct culture and traditions of our Pacific. It also demonstrated stakeholders coming together converting the challenges arising from COVID-19 into opportunities through leveraging digital technology and adapting to current circumstances.

Summary of key achievements:

- The outreach was significant with over 1,700 participants and a 70% login to registered rate, a long way above industry standards, further emphasizing the value in shared leadership of this platform and relevance and authenticity of content;
- The activities in the lead-up to the 2021 PRM including through the Technical Working Groups, the PRP Webinar series and the Youth Competition contributed to the increased awareness of and participation in the biennial PRM;
- The sessions and content elevated and demonstrated relevant Pacific-led resilience actions which have inspired genuine learning and connection;
- The diversity of the audience and participants reflected the multi-sectoral, diverse and inclusive approaches to resilience building in the Pacific which should continue to be nurtured and enhanced;
- The meeting showcased that despite challenges faced, commitment and determination and embracing new opportunities through digital technology and engaging with the private sector resulted in a successful PRM;
- The features and set-up of the online platform enabled interactive and engaged participation including those with visual and hearing impairments.

# OBJECTIVES



The **objectives of the meeting** were the following:

1. **ENGAGE** the audience, Pacific Leaders, decision-makers and international partners/donors to hear local, home-grown resilience actions (making content engaging, inclusive, representative, culturally sound and inspiring).
2. **CONNECT** the Resilience Community to collaborate, partner, learn, act and be heard on the successes, work and future challenges facing the region in an inclusive and localised manner – leading to new partnerships / Technical Working groups.
3. **DEMONSTRATE** the progress of the FRDP, its goals and its principles based on best resilience-building practices and standards that integrate, include, inform, and sustain.
4. **INSPIRE** and connect the resilience community and broader stakeholders through the innovative, practical, and successful learnings across the Pacific in actions supporting a resilient Pacific from diverse, dynamic and inclusive spaces.
5. **ELEVATE** resilience outcomes, work and challenges to our Pacific Leaders, decision-makers, global institutions, and international/donor agencies towards Pacific-led resilience into the future such as COP26, the Global Platform for DRR and the APMCDRR.

## DAILY SUMMARY

**Pre-PRM Youth Forum:** The Youth Forum kicked off the week on July 5th 2021 with about 700 young people connected from across the region. It led to a strong reinforcement that the Youth are an essential actor for mobilizing and advocating for resilience and climate action at all levels. [something about the next steps for youth / youth hub/ ?] It also covered a learning lab session on Youth-led discussion on enhancing disaster data collection for Sendai Framework Monitor.

**On PRM day one (July 6th 2021),** the opening session of the 2021 PRM was held live from Tuvalu with welcoming remarks from the PRP Taskforce Chair and Deputy Permanent Secretary for International, European & Pacific Affairs of French Polynesia, Engel Raygadas.

A key feature of the opening was the address from the Prime Minister of Tuvalu and Chair of the Pacific Islands Forum, Honorable Kausea Natano. His Excellency provided the added motivation for all who serve this region and its countries to continue to strive as a collective for improved resilience actions for better outcomes to our people and our communities as captured in Tuvalu's concept of fale-pili and kaitasi. The cultural performance from students of Tuvalu's secondary school and spiritual guidance from Reverend Fiafiaga Lusama set the tone for the meeting.

Day one's plenary highlighted the concept of self-reliance in an inter-connected world recognising the power of turning inward, learning from our past actions and building from our strength. It underlined the need for a more heightened awareness of risk within a multi-hazard context and emphasized the underlying messages from the FRDP and PRP around the need to do better and more with what we have, working together to do and achieve even more and our accountability for the actions we take and the impacts of our actions.





It also featured the following sessions:

- Session 1/integrate: Putting integration into action: a youth led conversation
- Session 2/include: The Shift to locally-led Resilience System (formal/informal) – What is at Stake?
- Session 3/inform: Improving risk communication for better resilience
- Session 4/sustain: Covid 19 ‘syndemic’: multiple risks, Response & Green Recovery
- Learning lab (2): Learning from each other: integration in theory and practice across levels in the Pacific

**On PRM day two (July 7th 2021)**, the plenary focussed on enabling factors for behavioural change and changing mindsets towards resilience were debated, stressing the importance of understanding the need for change, sustained community engagement, experiential learning and political leadership. These are driving outcomes that lead to development progress in sustainable and practical ways led and owned by the region at all levels.

Day two also featured the following sessions:

- Session 5/ integrate: People-centred infrastructure to sustain post COVID boom
- Session 6/include: Bringing it Back Home. Our Resilience and Our Rights –Nothing More, Nothing Less- Gender and Disability
- Session 7/inform: Traditional wisdom and practices essential to resilience
- Session 8/sustain: Status, challenges and opportunities for Low Carbon Development in the Blue Pacific
- Learning lab (3): Climate Justice Human Rights in the Pacific



On PRM day three (July 8th 2021), the spotlight in the plenary was on Partnerships, and the importance to explore and catalyse new and effective collaboration to support resilient initiatives.

Moving from a project-based approach to a partnership approach that is sustainable can ensure long term community benefits. Special attention was given to multi-stakeholder approaches, having mutual respect and appreciation for each other's contributions. Key enabling factors can be a clear vision, purpose, adaptability and responsiveness to the changing needs. Leadership is also key in a partnership (e.g. political) and can harness the operationalisation of an effective/transformative partnership.

Day three also featured the following sessions:

- Session 9 / integrate: Understand your risks: Risk Financing Solutions and Responses
- Session 10/include: Youth in the face of COVID19
- Session 11 /inform: Leveraging technology for all
- Session 12/sustain: Care for nature: Building a resilient Pacific through Nature-based Solutions
- Learning lab (4): Driving Inclusive Multistakeholder Partnerships: Redesigning the Table





Pacific Resilience Meeting- Outcomes The **outcomes** of the 2021 PRM are included in this report and are reflective of the Pacific Resilience Standards, with messages such as:

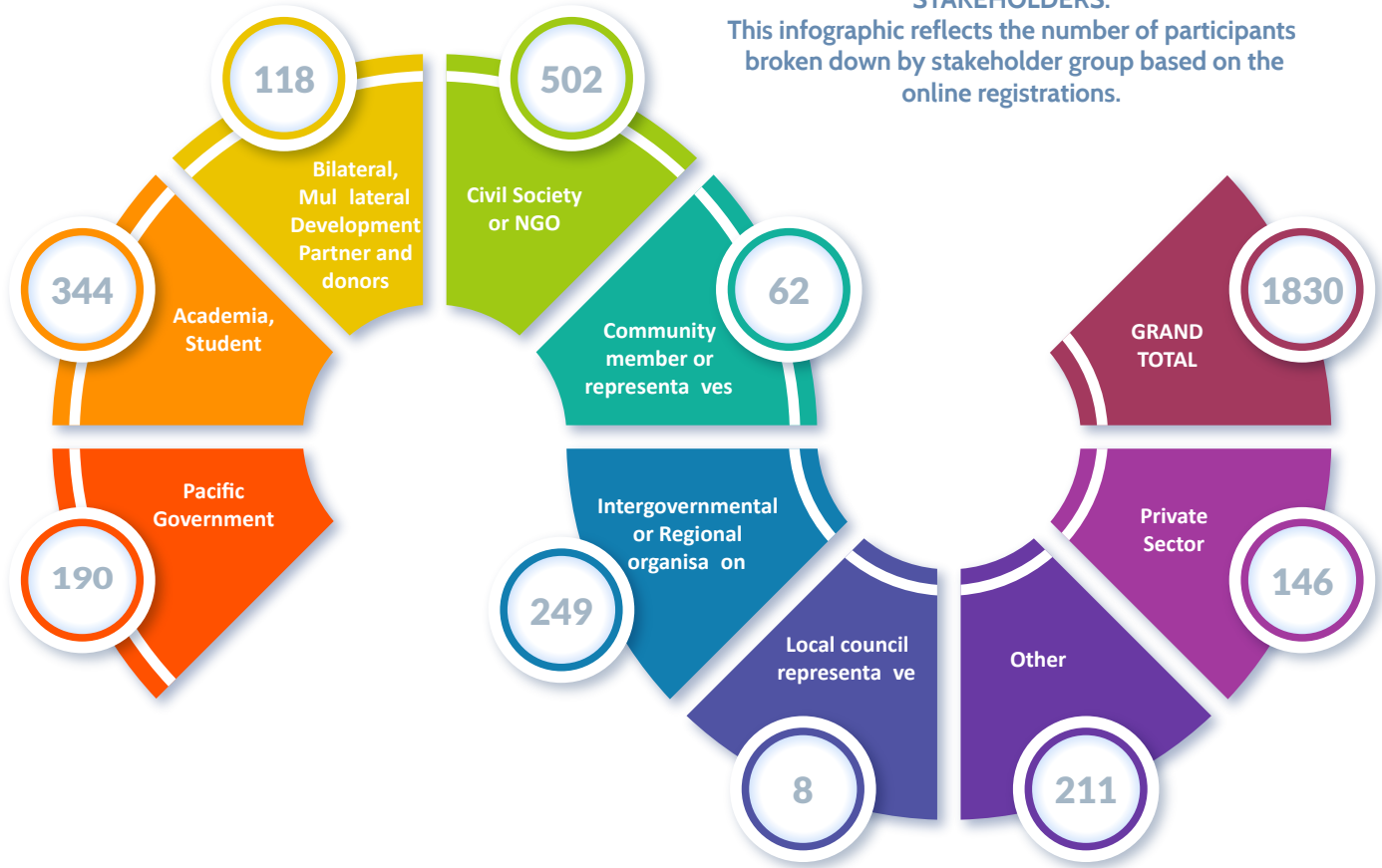
- Integrate and mainstream all risks into development policy and practices with the recognition to scale up financing;
- Resilience cannot be tackled indifferently from inclusion and justice. Addressing vulnerable groups specific needs through purposeful action is absolutely essential.
- The need remains to better understand disaster and climate risk, their impacts and to clearly communicate with existing and improved tools and practices.
- Make policies, actions, frameworks relevant by strengthening social-ecological system to enforce the system and elevate nature-based actions.

# AUDIENCE AND PARTICIPATION BREAK DOWN

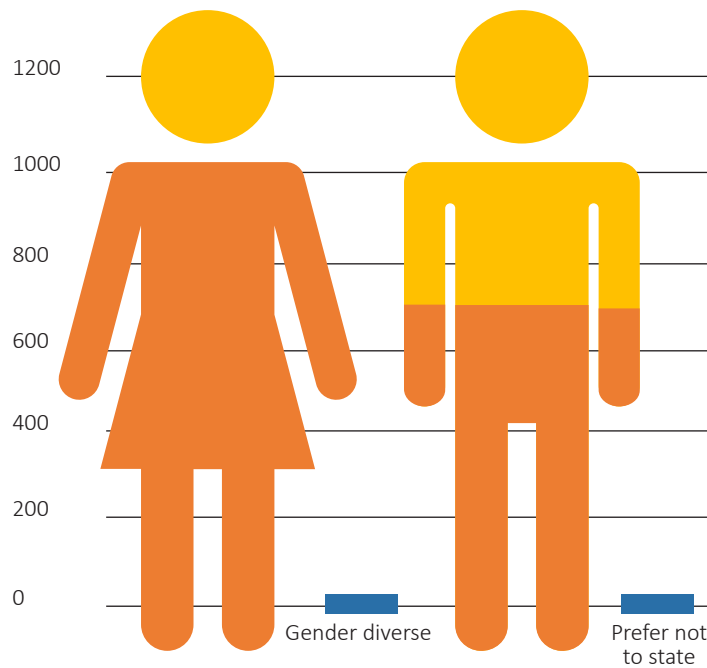


**STAKEHOLDERS:**

This infographic reflects the number of participants broken down by stakeholder group based on the online registrations.

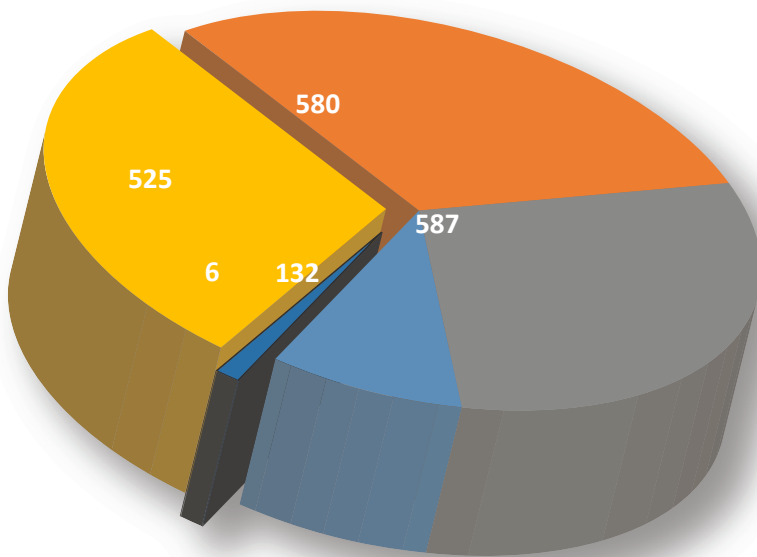


**BREAKDOWN BY GENDER**



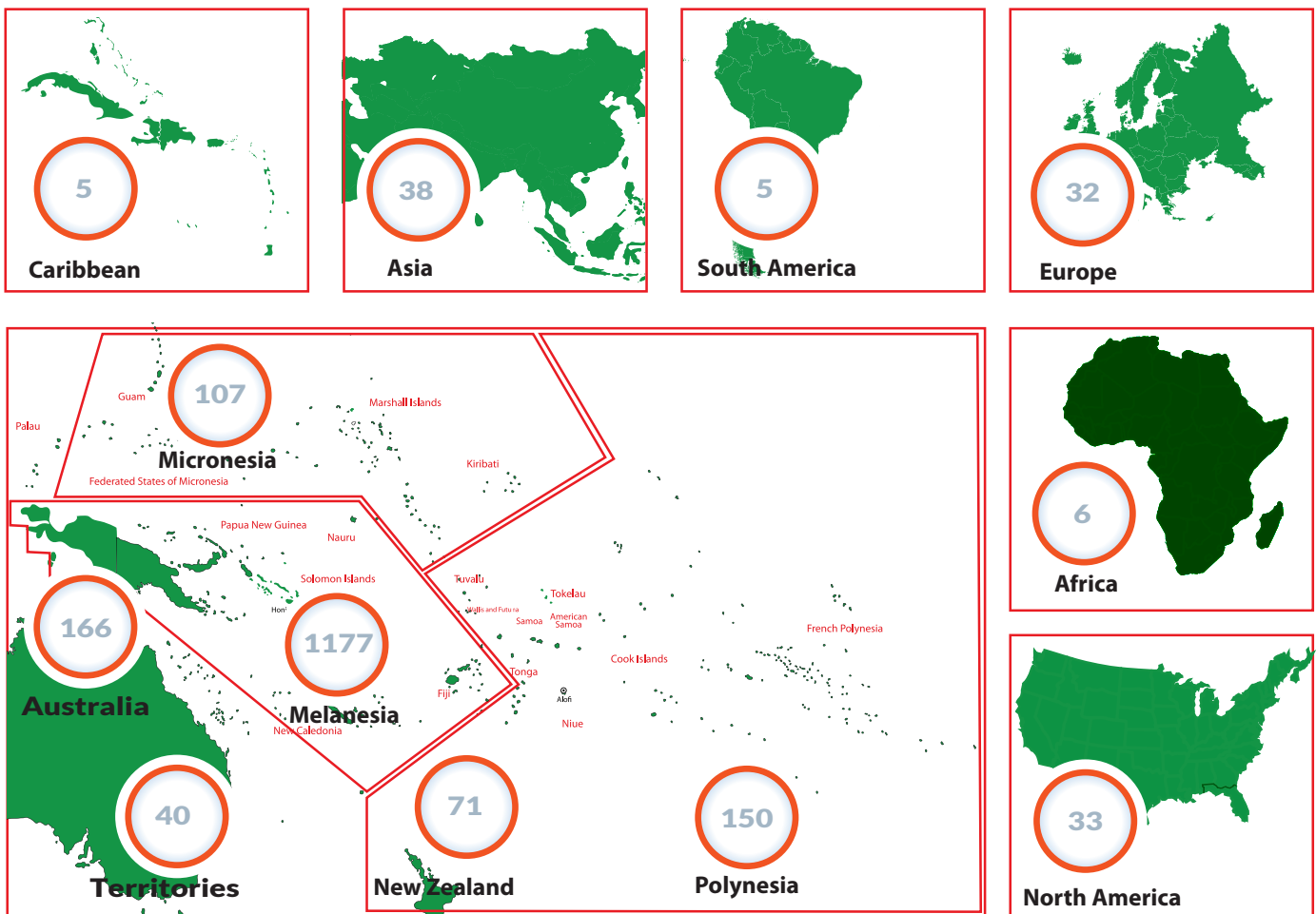
**GENDER:** The graph below reflects the breakdown by gender based on the online registrations. It shows a good representation across gender.

## BREAKDOWN BY AGE GROUP



**AGE GROUP:** The graph below shows the breakdown by age group based on the online registration. It shows that the interest in resilience building through the PRM platform is not limited to a particular age group but equally distributed across the ages 16 – 55 years of age.

## BREAKDOWN BY REGION



## DIVERSITY OF THE AUDIENCE AND PARTICIPANTS IS REFLECTED BELOW

**GEOGRAPHIC:** The following graph shows a breakdown of participants by the sub-regions within the Pacific including participation from regions outside of the Pacific. From the sub-region of the Pacific, the majority of attendance was from Melanesia and the numbers is reflective of participation from Fiji which is a hub for many of the agencies and stakeholders that are actively involved in the PRM and broader PRP.

# MODALITIES OF DELIVERY



The 2021 PRM was made possible by the collaboration of several partners, which constituted the organising committee and their networks who contributed to the structure and content of the sessions. It also included the recruitment of two consulting agencies with Varysian focusing solely on setting-up the virtual platform and the online logistics, and Pacific Destination Fiji and Talanoa Consulting setting-up the national hubs. Funding support was made possible through the European Union funded Pacific Adaptation to Climate Change and Resilience Building (PACRES) project which financed the online platform and national hubs with the exception of Palau national hub which was made possible through the support of IFRC and the Palau Red Cross National Society. The Government of Australia through the Implementation of the Pacific Resilience Partnership project supported Pacific Destination Fiji and Talanoa Consulting team.

## A/ VIRTUAL PLATFORM

The virtual platform enabled interactive and inclusive participation including for the visually and hearing impaired participants. The various features such as chats, virtual lounge rooms for networking, public gallery and virtual booths including opportunities to exchange profiles/business cards contributed to the interactive aspects of the online platform and contributed to the overall success of the 2021 PRM.

Positive feedback on the virtual platform was received by all participants including interest to ensure access remained open after the PRM concluded. Varysian was also very helpful and efficient, providing support as and when needed including through mitigating connectivity issues encountered as well as making sure the national hubs were able to participate effectively on the online platform.





# B/NATIONAL HUBS & PRIVATE SECTOR PARTNERSHIP

Setting up national hubs in participating countries was an opportunity to extend outreach to stakeholders that normally would not be able to attend the PRM if it was hosted in one single location and also if stakeholders faced connectivity challenges. Pacific Destinations Fiji and Talanoa Consulting serving as Logistics Coordinators for the national hubs were a unique combination as Pacific Destinations Fiji brought to the event their networks through the tourism industry and Talanoa Consulting its climate change network. Through the involvement of the tourism industry, it provided an opportunity to showcase the possibilities for further engagement with the private sector.



*Tuvalu National Hub*



*Vanuatu National Hub*



*RMI National Hub*



*Tonga National Hub*



*Kiribati National Hub*





*Solomon Islands National Hub*



*Cook Islands National Hub*



*Federated States of Micronesia National Hub*



*Palau National Hub*



*Nauru National Hub*



*Samoa National Hub*

Whilst the initial objective was to have national hubs across the 16 Pacific Island Countries and Territories, COVID-19 restrictions and other challenges resulted in having only 11 national hubs based in:

- Cook Islands
- Federated States of Micronesia
- Kiribati
- Nauru
- Palau
- Republic of Marshall Islands
- Samoa
- Solomon Islands
- Tonga
- Tuvalu
- Vanuatu

Palau national hub was made possible through the support of IFRC and the Palau National Red Cross Society. A further demonstration of the strength of the partnership, who through their strong engagement and commitment to the PRP, made the Palau hub a reality.

Pacific Island Countries and Territories that were not able to host national hubs due to COVID-19 restrictions and other challenges included:

- Fiji
- French Polynesia
- New Caledonia
- Niue
- Papua New Guinea

Feedback from the participants at the national hub was very positive and demonstrated the strong interest from the resilience practitioner community at the national level to engage and be involved in this platform. Interaction from the national level also indicated that stakeholders were networking among themselves and engaging as a collective to highlight the issues and opportunities specific to their national context, but with synergies from other parts of the region. It was a clear demonstration of the objectives of the PRM platform being put into practice which include: **ENGAGE, CONNECT, DEMONSTRATE, INSPIRE** and **ELEVATE**. The success of the national hubs and positive feedback from participants will be taken into consideration for future events.

ANNEXES



The 2<sup>nd</sup> Pacific Resilience Meeting (PRM), a biennial meeting of the Pacific Resilience Partnership (PRP), convened the 15 constituencies of the PRP, including national and subnational governments and administrations, civil society, communities, the private sector, academia, development partners, national, regional, and international organisations.

ANNEX 1 – Agenda and access links to replay on PRP youtube channel

AGENDA, 5th to 8th July 2021			
Time UTC +12 Fiji-time	Session Name	Details	Speakers / Coordinator
<b>Pre-PRM youth forum - Monday, 05h July 2021</b>			
12.00 12.30	Plenary	<b>Opening Welcome and Introduction</b>	<ul style="list-style-type: none"> <li>• <b>Moderator, Ernest Gibson.</b></li> <li>• <b>Mayren Wichep</b>, Youth for Change Micronesia</li> <li>• <b>Tokasa Seinibiau</b>, Fiji, Children and Youth Opening Message.</li> <li>• <b>Henry Puna</b>, PIFS Secretary General, Opening Remark.</li> <li>• <b>Stuart Minchin</b>, SPC Director General, Opening Remark.</li> <li>• <b>Sevuloni R.R.</b>, PRP Youth Working Group, PRP youth engagement, PRM</li> </ul>
12.30 13.00	Plenary	Theme: Our People, Our Journey, Nurturing Pacific Resilience from Home	<ul style="list-style-type: none"> <li>• <b>Kim Allen</b>, Papua New Guinea.</li> <li>• <b>Mayren Wichep</b>, Federated States of Micronesia.</li> <li>• <b>Tulua Finikaso</b>, Tuvalu.</li> <li>• <b>Itinterunga Rae Bainteti</b>, Kiribati</li> </ul>
13.00 14.00	Break-out sessions / <b>TALANOA</b>	<b>4 Break Out Sessions:</b> <ul style="list-style-type: none"> <li>• Pillar 1: Integrate - Integrating Disaster Risk &amp; Climate Change, resilient infrastructure, risk finance.</li> <li>• Pillar 2: Include - Gender, disability, children &amp; youth COVID19, locally led resilient systems.</li> <li>• Pillar 3: Inform - Information, communication, awareness, advocacy, wisdom, new technology.</li> <li>• Pillar 4: Sustain - Sustainability, local &amp; nature based solutions, green recovery &amp; COVID19, low carbon</li> </ul>	
14.00 14.30	Plenary	Report back from break out	
14.30 14.45	Plenary	<b>Wrap Up Vote of Thanks</b>	
15.00 16.00	Learning Lab	<b>Youth led discussion on enhancing disaster data collection for Sendai Framework Monitor</b>  Watch replay: <a href="https://youtu.be/3Fa3V-oaptI">https://youtu.be/3Fa3V-oaptI</a>	
<b>Tuesday, 06th July 2021</b>			
10.30 11.00	Official Opening	<b>Official Opening: Pacific Resilience Meeting</b>  <b>Live from Tuvalu</b>  Watch replay: <a href="https://youtu.be/jYLdp0C82g">https://youtu.be/jYLdp0C82g</a>	<ul style="list-style-type: none"> <li>• <i>Master of Ceremony: Ms <b>Tapua Pasuna</b>, Tuvalu Youth Rep</i></li> <li>• <i>Opening Prayer</i></li> <li>• <i>Mr <b>Engel Raygadas</b>, Chair of the Pacific Resilience Taskforce, (French Polynesia)</i></li> <li>• <i><b>H.E. Kausea Natano</b>, Prime Minister of Tuvalu</i></li> <li>• <i><b>Mayren Wichep</b>, Youth for Change Micronesia</i></li> </ul>
11.00- 12.00	Plenary #1;	<b>Self-reliance in an interconnected world</b>  Nurturing resilience from home – how far have we come and where do we want and need to go from here? This plenary focuses on our journey of self-reliance with Pacific resilience starting from home.  Watch replay: <a href="https://youtu.be/4dvz_zLrnBo">https://youtu.be/4dvz_zLrnBo</a>	<ul style="list-style-type: none"> <li>• <i><b>Marlene Dutta</b>, Barter for Better Fiji, Administrator &amp; Pacific regional manager</i></li> <li>• <i><b>Rev. James Bhagwan</b>, General Secretary Pacific Council of Churches</i></li> <li>• <i><b>Kathy Jetnil-Kijiner</b>, Climate Envoy, Director <b>Jo-Jikum</b>, RMI</i></li> </ul> <b>Moderator: Samantha Magick, Islands Business</b>

<p><b>12.00-1.00pm</b></p>	<p><b>Resilience Standards technical sessions</b></p>	<p><b>INTEGRATE Session 1</b>  <b>Putting integration into action: a youth led conversation</b></p> <ul style="list-style-type: none"> <li>• <b>Linda Vaike</b>, USP Student and Researcher.</li> <li>• <b>Mosese Sikivou</b>, Pacific Islands Forum, PREP Regional Coordinator</li> <li>• <b>Esline Garaebiti</b>, Director General Vanuatu Ministry of Climate Change</li> <li>• <b>Epeli Lesuma</b>, Fiji Red Cross Society</li> <li>• <b>Moderator: Deborah Koon Wai</b>, Volunteer and Youth Representative Samoa Red Cross Society</li> <li>• <b>Co-Moderator: Jess Lees</b>, Humanitarian Advisory Group</li> </ul> <p>Watch replay: <a href="https://youtu.be/VDYacyH7aOc">https://youtu.be/VDYacyH7aOc</a></p>	<p><b>INCLUDE Session 2</b>  <b>The shift to locally led resilience systems: what is at stake?</b></p> <ul style="list-style-type: none"> <li>• <b>Jay Nasilasila</b>, Director Tupou Institute of Technology</li> <li>• <b>Rev. Dr. Ungatea Kata</b>, Director of Tupou Institute Technology</li> <li>• <b>Bhavya Srinivasan</b>, Start Network</li> <li>• <b>Radovibua Tagivetaua</b>, Bus Urban Youth Network/FCOSS</li> <li>• <b>Moderator: Akanisi Dawainavesi</b> IPPF</li> </ul> <p>Watch replay: <a href="https://youtu.be/zx9ikNh5N8I">https://youtu.be/zx9ikNh5N8I</a></p>
<p><b>1.00-2.00pm</b></p>		<p><b>INFORM Session 3</b>  <b>Improving risk communication for better resilience</b></p> <ul style="list-style-type: none"> <li>• <b>Mere Roden</b>, Chairperson of the Disability COVID19 Taskforce</li> <li>• <b>Deavina Ken</b>, Youth Volunteer, Palau Red Cross</li> <li>• <b>David Hiba</b> Director, Meteorological Service, Solomon Islands</li> <li>• <b>Samuel Michemi</b> Scientific Officer, WMO, Solomon Islands</li> <li>• <b>Moderator: Vasiti Soko</b>, Fiji National Disaster Management Director</li> <li>• Co-moderator: <b>Andrew McElroy</b>, Head of the United Nations Office for Disaster Risk Reduction's Pacific sub-regional office</li> </ul> <p>Watch replay: <a href="https://youtu.be/7ltsWFOIA5M">https://youtu.be/7ltsWFOIA5M</a></p>	<p><b>SUSTAIN Session 4</b>  <b>COVID19 syndemic: multiple risks, response and green recovery</b></p> <ul style="list-style-type: none"> <li>• <b>Tutii Chilton</b>, Executive Director at Palau Energy Administration</li> <li>• <b>Crytsal'Ake</b>, Safeguard and M&amp;E Coordinator for MORDI Tonga Trust</li> <li>• <b>Tuuri Tanta</b>, National Youth Representative at Kiribati Red Cross Society</li> <li>• <b>Meiapo Faasau</b>, Disaster Law and Advocacy Pacific at IFRC</li> <li>• <b>Moderator: Viliamu Iese</b>, Research Fellow at the University of the South Pacific</li> </ul> <p>Watch replay: <a href="https://youtu.be/aE9SHhgB0So">https://youtu.be/aE9SHhgB0So</a></p>
<p><b>2.00-3.00pm</b></p>	<p><b>Learning Lab</b></p>	<p><b>Learning from each other: integration in theory and practice across levels in the Pacific</b></p> <p><b>Litea Biukoto</b>, Team Leader Disaster Risk at Pacific Community (SPC)  <b>Linda Vaike</b>, USP Student and Researcher.</p> <p><b>Break-out room moderators</b>  <b>Jofiliti Veikoso</b>, Gender and Resilience and Live and Learn Environmental Education  <b>Yo Kunieda</b>, Disaster Risk Reduction Officer UNDRR  <b>Raniyah Muhammed</b>, National Coordinator (Fiji) at Commonwealth  <b>Niumai Kavoa</b> Red Cross Youth Coordinator, Fiji  <b>Jen Stewart</b>, IFRC Country Cluster Delegation, Pacific</p> <p>Watch replay: <a href="https://youtu.be/4dNht0Hibt0">https://youtu.be/4dNht0Hibt0</a></p>	

Wednesday 7th July, 2021

<p>11.00-12.00</p>	<p>Plenary #2</p>	<p><b>Changing of mindsets: transforming ideas into reality to drive resilience at all levels through behaviour change approaches</b></p> <p>This session will focus on how resilience actions are driven from home and the evolution of changes in behaviour that support practical and relevant approaches towards resilient actions from and across the Pacific.</p> <p>Exploring the enabling factors through behaviour change that drive outcomes and a shift in mindset towards a safer and more resilient Pacific.</p> <p><b>Watch replay: <a href="https://youtu.be/jndha1eeq4U">https://youtu.be/jndha1eeq4U</a></b></p>	<ul style="list-style-type: none"> <li>• <b>Dr Amisha Mehta</b>, Disaster risk and crisis communications specialist, Queensland University of Technology (QUT)</li> <li>• <b>Mr Soane Patolo</b>, CEO Mordi Tonga</li> <li>• <b>Meli Tuqota</b>, Change 4 Good</li> <li>• <b>Moderator: Viliamu Iese</b>, USP</li> </ul>
<p>12.00-1.00pm</p>	<p>Resilience Standards technical sessions</p>	<p><b>INTEGRATE Session 5 People-centered infrastructure to sustain post COVID boom</b></p> <ul style="list-style-type: none"> <li>• <b>Cedella Nongebatu</b>, Storyteller, actor and activist, Solomon Islands</li> <li>• <b>Reijeli Taylor</b>, Manager Strategic Planning, Change Management at TLTB</li> <li>• <b>Eddie Sukanaivalu</b>, Head of Learning and Development Digicel PNG</li> <li>• <b>Moderator: Jeshua Hope</b>, Communications OXFAM in the Pacific</li> </ul> <p><b>Watch replay: <a href="https://youtu.be/UibtHmNvFII">https://youtu.be/UibtHmNvFII</a></b></p>	<p><b>INCLUDE session 6 Bringing it Back Home. Our resilience and our rights - nothing more, nothing less (gender and disability).</b></p> <ul style="list-style-type: none"> <li>• <b>Maria Nailevu</b>, Executive Director femLINK Pacific Media Initiatives for Women</li> <li>• <b>Luisa Tuilau</b>, Monitoring, Evaluation and Research Coordinator at femLINK Pacific</li> <li>• <b>Sainimili Tawake</b>, Regional Coordinator on climate change at Pacific Disability Forum</li> <li>• <b>Dr Rachel Devi</b>, Head of Family Health Unit. Fiji Ministry of Health.</li> <li>• <b>Lilly Be'Soer Kolts</b>, Executive Director, Voices for Change, PNG</li> <li>• <b>Helentina Garstang</b>, Medical advisor at Marshall Islands Ministry of Health.</li> </ul> <p><b>Moderator: Susan Grey</b>, FemLINK</p> <p><b>Watch replay: <a href="https://youtu.be/gqVdD02sYIs">https://youtu.be/gqVdD02sYIs</a></b></p>
<p>1.00-2.00pm</p>		<p><b>INFORM Session 7 Traditional wisdom and practices essential to resilience</b></p> <ul style="list-style-type: none"> <li>• <b>Alifereti Tawake</b>, LMMA Network</li> <li>• <b>Dr Rosiana Lagi</b>, USP Research</li> <li>• <b>Maxine Anjiga</b>, Executive Director, PNGCLMA</li> <li>• <b>Terri Tucson</b>, LMMA Network International</li> <li>• <b>Moderator: Rone Vave</b>, University of Hawaii LMMA Network</li> </ul> <p><b>Watch replay: <a href="https://youtu.be/1SKIBBzFUZA">https://youtu.be/1SKIBBzFUZA</a></b></p>	<p><b>SUSTAIN Session 8 Status, challenges and opportunities for low-carbon development in the Blue Pacific</b></p> <ul style="list-style-type: none"> <li>• <b>Akuila Tawake</b>, Deputy Director Geoscience, Energy and Maritime Division, Pacific Community (SPC)</li> <li>• <b>Abraham Simpson</b>, Project Implementation Officer, Sustainable Energy Industry Dev. Project, PPA</li> <li>• <b>Christian Goerg</b>, Project Manager, Regional Pacific NDC Hub</li> <li>• <b>Deepitika Chand</b>, Climate Change Mitigation Officer Fiji Country Representative</li> <li>• <b>Dr Bruce Robin</b>, Energy Sector Advisor FSM country representative</li> <li>• <b>Solomone Fifita</b>, Manager PCREEE, Pacific Community (SPC)</li> <li>• <b>Zullah Mohammed</b>, Maritime Safety and Energy Advisor, Pacific Community (SPC)</li> <li>• <b>Moderator: Tuti Chitton</b>, Chairman of the Pacific NDC Hub Steering Committee, Palau Country Representative</li> </ul> <p><b>Watch replay: <a href="https://youtu.be/FTzOBa5LVCA">https://youtu.be/FTzOBa5LVCA</a></b></p>

<b>3.00-4.00pm</b>	<b>Learning Lab</b>	<b>Climate justice, human rights in the Pacific Pacific Islands Climate Action Network (PICAN)</b>	
<b>Thursday 08th July 2021</b>			
<b>11.00-12.00</b>	<b>Plenary #3</b>	<p><b>Partnering for resilience: a collective impact</b></p> <p>The rationale for multi-stakeholder partnerships is a clear and compelling driver of resilience. This basically supports the notion that no single group or organisations can address a wide range of complex ways of dealing with the impacts of climate change. This session will demonstrate, discuss and connect through enabling systems and partnerships towards increased resilience.</p> <p><b>Watch replay: <a href="https://youtu.be/I7nXRi_YxN4">https://youtu.be/I7nXRi_YxN4</a></b></p>	<ul style="list-style-type: none"> <li>• <b>Dr Tapugao Falefou</b>, Secretary to Government of Tuvalu and Chair of the Pacific Humanitarian Pathway on COVID-19</li> <li>• <b>Choi Yeeting</b>, Senior, Policy Advisor &amp; National Climate Change Coordinator. Government of Kiribati</li> <li>• <b>Janet Lotawa</b>, Executive Director and Co-Founder, Rise Beyond the Reef, Fiji</li> <li>• <b>Moderator: Kate Brown</b>, Executive Director of Global Island Partnership</li> </ul>
<b>12.00-1.00pm</b>	<b>Resilience Standards technical sessions</b>	<p><b>INTEGRATE (session 9) Understand your risks: Risk Financing Solutions and Responses</b></p> <ul style="list-style-type: none"> <li>• <b>Saane Lolo</b>, Dep. Chief Financing Officer, Ministry of Finance, Tonga</li> <li>• <b>Krishika Narayan</b>, Group Chief Operating Officer, Fiji Care</li> <li>• <b>Losana Kumar</b>, IT and Accounts Officer, Cane Farmers Co-operative</li> <li>• <b>Hanna Uusimaa</b>, Senior Climate Change Specialist, ADB</li> <li>• <b>Moderator: Habiba Gitay</b>, Senior Climate Resilient Development Specialist, World Bank</li> </ul> <p><b>Watch replay: <a href="https://youtu.be/joHbHHtnObc">https://youtu.be/joHbHHtnObc</a></b></p>	<p><b>INCLUDE (session 10) Youth in the face of COVID19</b></p> <ul style="list-style-type: none"> <li>• <b>Sean Casey</b>, World Health Organisation COVID19 Incident Manager</li> <li>• <b>Sunia Soakai</b>, Deputy Director Public Health Division, Pacific Community (SPC)</li> <li>• <b>Uvenama Rova</b>, Secretary-General Red Cross Society, PNG</li> <li>• <b>Vani Catansiga</b>, Executive Director, FCOSS</li> <li>• <b>Leslie Tikotikoca</b>, Pacific Youth Council</li> <li>• <b>Moderator: Seviloni Rokomatu Ratu</b>, Pacific Youth Council, Fiji</li> </ul> <p><b>Watch replay: <a href="https://youtu.be/qtV11dVWqfo">https://youtu.be/qtV11dVWqfo</a></b></p>

<p><b>1.00-2.00pm</b></p>		<p><b>INFORM (session 11)</b>  <b>Leveraging technology for all</b></p> <ul style="list-style-type: none"> <li>• <b>Taniela Tokailagi</b>, Twitter Space Jam, Fiji</li> <li>• <b>Lucille Apis-Overhoff</b>, Ass. Secretary Climate Change Republic of the Marshall Islands</li> <li>• <b>Lenara Tupa'i Fui</b>, A/CEO Health Technology &amp; Communications, Ministry of Health, Samoa</li> <li>• <b>Dr Stuart Minchin</b>, Director-General, Pacific Community (SPC)</li> <li>• <b>Moderator: Litea Biukoto</b>, Team Leader Disaster Risk, Pacific Community (SPC)</li> </ul> <p>Watch replay: <a href="https://youtu.be/9baHa6SnC7Y">https://youtu.be/9baHa6SnC7Y</a></p>	<p><b>SUSTAIN (session 12)</b>  <b>Care for nature: building a resilient Pacific through nature-based solutions.</b></p> <ul style="list-style-type: none"> <li>• <b>Ludovic Branlant, Kiwa</b> Coordinator, SPC</li> <li>• <b>Nicolas Rocle</b>, Marine Conservation and Management Specialist, SPREP</li> <li>• <b>Joshua Wycliffe</b>, Permanent Secretary Min. of Environment, Fiji</li> <li>• <b>Fred Patison</b>, Climate Change Finance Readiness Advisor, SPREP</li> <li>• <b>Andrew Foran</b>, Regional Program Coordinator, IUCN</li> <li>• <b>Moderator: Anne-Claire Goarant</b>, CCES Manager, SPC</li> </ul> <p>Watch replay: <a href="https://youtu.be/SKUhbVh1WXI">https://youtu.be/SKUhbVh1WXI</a></p>
<p><b>2.00-3.00pm</b></p>	<p><b>Learning Lab</b></p>	<p><b>Driving inclusive multi-stakeholder partnerships: redesigning the table</b>  <b>Caroline Kitione</b>, Regional Young Women's Focal Point, Shifting the Power Coalition  <b>Flora Vano</b>, Country Program Manager ActionAid Vanuatu  <b>Angeline Chand</b>, Human rights and gender advisor, Pacific Disability Forum  <b>Moderator: Sharon Bhagwan Rolls</b>, Shifting the Power Coalition</p> <p>Watch replay: <a href="https://youtu.be/MMa1FTm7Puk">https://youtu.be/MMa1FTm7Puk</a></p>	
<p><b>3.00-3.30pm</b></p>	<p><b>Closing ceremony</b></p>	<p>Closing ceremony and outcomes presented to the attendees of the Pacific Resilience Meeting</p> <p>Watch replay: <a href="https://youtu.be/Mzz2CQMitt8">https://youtu.be/Mzz2CQMitt8</a></p>	<p>Moderator: Rhonda Robinson, Deputy Director GEM Division. Pacific Community SPC and Chair of the Organising Committee for the Pacific Resilience Meeting</p> <ul style="list-style-type: none"> <li>• Chair of the Pacific Resilience Taskforce, Mr <b>Engel Raygadas</b> (French Polynesia)</li> <li>• Youth Representative, Pacific Youth Council</li> <li>• Closing Prayer</li> <li>• Photo Montage from National Hubs</li> </ul>



OUTCOMES STATEMENT  
2nd Pacific Resilience Meeting  
6- 8 July 2021

The PRM met at a time of significant stress. The COVID-19 pandemic continued to combine with the negative impacts of recent cyclones and drought as well as the ongoing biodiversity loss exacerbated by the Climate Emergency.

The meeting convened under the theme: OUR PEOPLE, OUR JOURNEY: NURTURING PACIFIC RESILIENCE FROM HOME. The theme emphasizes that resilience begins at home and in our communities. It is a resilience that builds on the distinct culture and traditions of our Pacific. At the same time, it is a resilience that addresses new challenges and embraces fresh opportunities. It is a resilience in which all of us are stakeholders, with a responsibility to preserve and enhance it through our individual and collective actions and approaches.

Experiences and learning were shared in order to scale up implementation of the Framework for Resilient Development in the Pacific: An Integrated Approach to Climate Change and Disaster Risk Management 2017-2030 (FRDP).

Honourable Kausea Natano, Prime Minister of Tuvalu delivered the opening address. He urged the region to turn the unique challenge of the COVID-19 pandemic into an opportunity for all stakeholders to work smarter and more collaboratively emphasising that “our journey of resilience starts with us taking action now”. The Prime Minister emphasised that such an approach should begin at home, draw on traditional and cultural practice that has served the Pacific well in the past, while at the same time embrace advancements in science and technology. He concluded by saluting the establishment of the Pacific Resilience Facility by Pacific leaders as an example of a such a smart, collaborative approach.

Overall, the PRM urged members of the PRP, national and subnational governments and administrations, the private sector, civil society and communities, regional organisations, and development partners to reaffirm the importance of:

1. The FRDP to guide resilience action;
2. The PRP to drive, enhance, and promote various perspectives and capacities to strengthen national and community resilience;
3. Individual and collective self-reliance – within the wider Blue Pacific community – as a precondition of greater resilience and well-being;
4. A multi-dimensional partnership with a clear purpose and vision that is responsive to wide-ranging needs and which recognises all stakeholders equally given the complex and compounding nature of risk from multiple hazards;
5. The need for sustained engagement at all levels by all stakeholders individually AND collaboratively and especially youth and children, to lead and support behavioural change using relevant approaches and mediums;
6. The culture of the Pacific as historically one of abundance and reciprocity which forms a solid foundation upon which future resilience can be built;
7. Monitoring progress of resilience action at the national level to guide policy and support reporting against the Sendai Framework for Disaster Risk Reduction and achievement of the Sustainable Development Goals 2030 ensuring consistency with commitments to disability rights, gender equality and women’s rights; and
8. Disseminating this PRM Outcomes Statement and PRM Youth Forum Outcomes Statement annexed hereto, as a consolidated ‘perspective of the Pacific’ to positively influence transparent and accountable policy and practice at the national, regional, and global level.

The PRM focused discussion and recommendations around the FRDP’s 10 Guiding Principles and 3 Goals which essentially fall into four ‘standards’ for resilience, namely INTEGRATE, INCLUDE, INFORM, and SUSTAIN. The standards share regionally agreed effectiveness and behavioural values for guiding and enhancing resilience building in the Pacific.

THE MEETING URGED ALL STAKEHOLDERS TO

INTEGRATE and mainstream climate, disaster, environmental, social, and health risks into development policy, law and practice. The PRM committed to

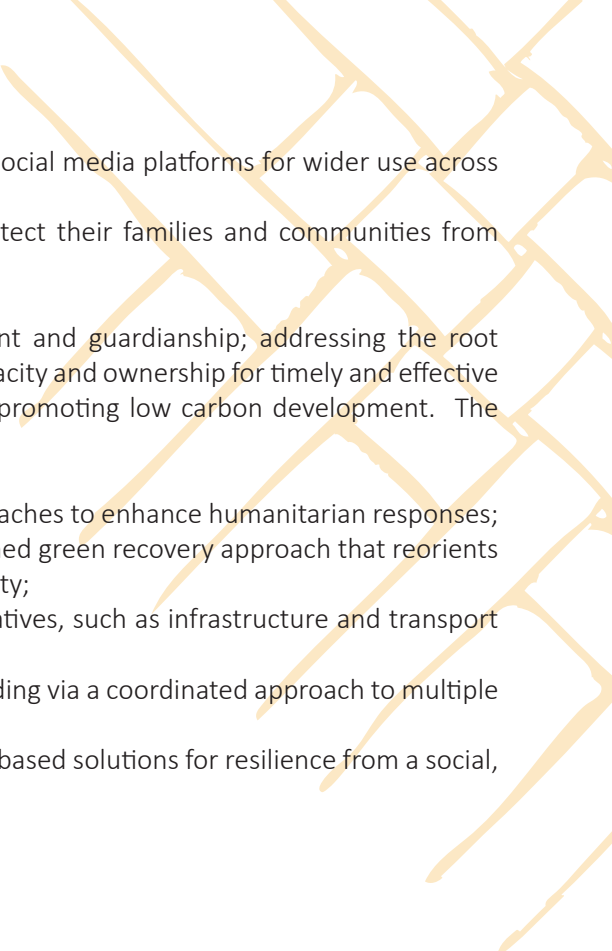
9. Strengthen integrated approaches to address climate change and disaster risk from national to community level, with consistent and enduring collaboration and coordination across levels, with the support of regional and international actors, to minimize duplication and waste of resources thus bridging the gap between national policy and community implementation;
10. Support building the leadership capacity of young people and community members in general to better interpret and disseminate information on integrated climate and disaster resilience, so that communities 'survive and thrive' before, during, and after disasters;
11. Draw from past lessons and traditional practices and utilize contemporary tools and approaches to enable resilience through sharing, trading and fostering a sense of community and self-reliance; and
12. Scale up climate and disaster risk financing to address national, sectoral and community needs using systems and institutional arrangements that are accessible, effective, and which deliver results;

INCLUDE and prioritise the rights and needs of those in vulnerable situations, including women, children, youth, LGBTQI+ and people with disabilities; and empower those most at risk to determine and implement resilience building actions. The PRM committed to

13. Highlight and address the intersectional impacts of multiple crises on women, particularly women with disabilities, women in rural and isolated areas and transgender people;
14. Encourage greater action to strengthen diverse women's leadership and resilience in an era when the COVID-19 pandemic has exacerbated pre-existing issues of vulnerability, exposure, and risk;
15. Facilitate regular, open and frank dialogue at all levels to help dismantle biases that prevent the acceptance of diverse opinions and the equality of all groups;
16. Roll out more inclusive and accessible national level disaster risk finance networks to build comprehensive financial protection;
17. Build on the examples of local, women-led gender-responsive and disability-inclusive approaches to health emergencies and climate-related disasters;
18. Engage more with diverse young people and youth front-line workers and responders given their invaluable contributions in the COVID-19 response at community level;
19. Address the barriers faced by persons with disabilities and provide support in terms of accessibility, assistive devices, community based inclusive development, support services, and social protection to enable them to become active agents for transformation and resilience;
20. Emphasize the need for utility and infrastructure service and system providers to be more inclusive in their approaches based on community needs, particularly in terms of health, safety, and protection;
21. Accelerate the documentation of traditional wisdom and practices, and support knowledge holders to mentor and share learning;
22. Reaffirm the importance of tradition and faith, and move towards a "renewed normal" for building trust and relationships that are critical for resilience in the face of current and future shocks; and
23. Strengthen partnerships with local women's organisations and networks and private sector to enable access to information;

INFORM resilience building through open and ready access to traditional knowledge and contemporary disaggregated data; by incorporating cultural and traditional resilience, worldviews, and spiritual beliefs; and by strengthening partnerships for sharing lessons and good practice. The PRM committed to

24. Increase efforts to better understand climate and disaster risk and their impact; and clearly and inclusively communicate early warnings for early action, at all levels and across all sectors;
25. Reconnect more with Pacific traditional wisdom – based on a systemic, collaborative approach – to strengthen our culture of resilience, and therefore enabling quicker recovery from compound disasters, such as cyclones and pandemics;
26. Explore further our ancestors' culture of resilience developed over generations – such as farming practices – to alleviate the impacts of COVID 19 and address such challenges as food security;
27. Avoid negative recurring practices in disaster response that stress the environment and exacerbate underlying risks;
28. Increase collaborative action to address the adverse impacts of climate change that is driving mobility and displacement;

- 
- 29. Increase the understanding and importance of climate justice;
  - 30. Innovate through appropriate and accessible new technology digital and social media platforms for wider use across all demographics to enhance inclusive resilience decision-making; and
  - 31. Reaffirm Pacific people's right to health, and related information to protect their families and communities from COVID-19 and other health threats;

SUSTAIN resilience building by incorporating ecosystem-based management and guardianship; addressing the root causes of vulnerability including poverty and inequity; strengthening local capacity and ownership for timely and effective preparedness, response, recovery, and risk informed development; and by promoting low carbon development. The PRM committed to

- 32. Strengthen social-ecological systems and reinforce people-centered approaches to enhance humanitarian responses;
- 33. Promote the evidence and opportunities for a multi hazard and risk informed green recovery approach that reorients economic systems towards resilience and social and ecological sustainability;
- 34. Accelerate efforts to introduce and sustain low carbon development initiatives, such as infrastructure and transport development, at both national and community level;
- 35. Scale up the implementation of legislation to support climate action, including via a coordinated approach to multiple risk and hazards; and
- 36. Elevate the importance and encourage the development of robust nature-based solutions for resilience from a social, economic, and environmental perspective.

OUTCOMES STATEMENT  
2nd Pacific Resilience Meeting Youth Forum  
5 July 2021

The 2<sup>nd</sup> Youth Forum at the Pacific Resilience Meeting (PRM) was attended by more than 700 participants from across the Pacific Island countries and territories, under the PRM theme of OUR PEOPLE, OUR JOURNEY: NURTURING PACIFIC RESILIENCE FROM HOME. Key to the discussions was the sub theme of ‘Why Youth Matter’, a reminder to us and others that youth are actively engaged in building resilience in our communities. It was precluded by an online consultation, particularly for those youth who were unable to attend the Forum.

The Youth Forum began with a statement delivered by Children’s Disaster Risk Reduction & Climate Resilience advocate, Ms. Tokasa Senibiau, from the DRR Club in Valenicina Community in Fiji<sup>1</sup>. She emphasized children and youth are worried about an unsafe and unhealthy future. She stated it is a right of children and youth, and an empowering protection strategy, to participate in disaster and risk assessment, and designing and implementing integrated DRR and climate change initiatives. She declared that while genuine participation required the transfer of power and responsibility to children and youth, it is not a replacement for adult responsibility.

The Secretary General of the Pacific Islands Forum, the Honourable Mr. Henry Puna, in his address, declared that ‘Youth will be the lightning rod of change for our region’. He emphasized that youth bring a sense of reality, of urgency and a fresh perspective to policy conversations. Therefore, youth voice is instrumental to decision making and policy development. He commended youth for continually demonstrating courage and persistence, in mobilizing and advocating for resilience and climate action at all levels.

The Director General of the Pacific Community, the Honourable Dr. Stuart Minchin in his address emphasized that youth development is a cross-cutting issue, and to achieve genuine and lasting improvement in the region, a multi-stakeholder approach is necessary. He also encouraged youth to continue to be actively engaged in resilience work.

The Chair of the Pacific Resilience Partnership Youth Working Group<sup>2</sup>, Mr. Sevuloni Rokomatu Ratu, in his remarks called for children and youth engagement to be recognized and embedded as part of the Pacific Resilience Partnership governance arrangement, to support the implementation of the Framework of Resilient Development in the Pacific.

The Youth Forum focused its discussions around the four pillars of resilience, that is, INTEGRATE, INCLUDE, INFORM and SUSTAIN, and to this end committed to:

- URGE collaboration amongst all partners to ensure the integration of disaster risk management and climate change.
- CALL for the review of current national policies, frameworks, and legislation to ensure integration of disaster risk management and climate change.
- ENCOURAGE the development of local capacities and the provision of finance to design, implement and evaluate integrated disaster risk management and climate change initiatives at national and regional level.
- RECOGNIZE and promote children and youth as educators, advocates, agents of change, volunteers and as equal partners in the fight against climate change.
- ENCOURAGE young people to join the fight against COVID19 at the community, national & regional level.
- CALL for the sharing and provision of resources to ensure the meaningful inclusion of children, youth, people living with disabilities, women, and persons of diverse genders, in disaster risk management, humanitarian response and climate change decision making processes and actions.
- RECOGNIZE the importance of traditional knowledge and practices in resilience building.

<sup>1</sup>Tokasa Seinibiau, DRR Club in Valenicina Community, Lami, Fiji which is supported by Save the Children Fiji.

<sup>2</sup>PRP Youth WG Chair from IFRC Pacific and co-chaired with Pacific Youth Council, including members from: PIANGO, Save the Children, Live & Learn, Oxfam, USP, Commonwealth Climate Youth Network, PIFS and SPC.

- URGE the promotion of intergenerational learning that will encourage young people and leaders to collaborate.
- PROMOTE a citizen and people-centred approach to disaster risk management and climate change, to ensure access to humanitarian assistance and support required during disasters and climate emergencies, including the ongoing COVID19 pandemic.
- ENCOURAGE the provision of support to community leaders and communities, to build their capacity and engagement in strengthening their resilience, thus ensuring locally led resilience systems.
- SUPPORT the progress that has been made on the youth resilience hub as a mechanism to strengthen the sharing of information, awareness and advocacy, and the promotion of Pacific wisdom and traditional knowledge.
- WELCOME the support of partner agencies in the development of the youth resilience hub.
- PROMOTE the use of information technology including social media to share and receive information, including applications that can collate data during emergency response.
- ENCOURAGE the engagement of children and youth in the promotion of local and nature-based solutions to resilience.
- PROMOTE green, low carbon COVID19 recovery that will contribute to sustainable, environmentally friendly communities thus reducing the impact of COVID19 and climate change.
- CALL for access to equitable, critical, and intentional opportunities that cultivate new green jobs, entrepreneurship and financing which accelerates our regions capacity to address disaster risk and climate change.

WE encourage all constituents of the Pacific Resilience Partnership to disseminate and advocate the important messages outlined in this Outcomes Statement, recognizing its link to the overall PRM outcomes and its subsequent inclusion in the meeting report by the PRP Taskforce.

05 July 2021

CHAIR’S SUMMARY  
2nd Pacific Resilience Meeting  
6- 8 July 2021

This 2nd Pacific Resilience Meeting has once again brought together a cross section of partners from government, the private sector, civil society organisations, development agencies, local/ national/ regional and international organisations, youth and community representatives. It necessarily had to be a virtual get together as we combat the Covid19 pandemic. In that though, we demonstrate another form of resilience that requires that we continue to push our own boundaries to ensure that the important discussions and decisions concerning the Pacific region continue to be held. As the Prime Minister of Tuvalu, the Honourable Kausea Natano, said in his Opening address, the challenge of the Covid19 pandemic provides an opportunity to work smarter and collaboratively, using both traditional and modern knowledge and practice. It is apt, therefore, that the theme for PRM 2021 is ‘Our People, Our Journey: Nurturing Pacific Resilience from Home’.

May I take this opportunity to thank the Prime Minister for his inspiring words, and the people of Tuvalu for their beautiful cultural performance to welcome us into the PRM space.

There have been approximately 1000 participants, navigating the virtual world of the PRM 2021.

We kicked off our gathering with our young people, in the PRM Youth Forum- a key part of the ‘Include’ pillar. We have just heard the outcomes of that Forum and I commend the youth of the Pacific for their insights and the work that they continue to do to build a resilient and strong region. It also reaffirms the integral role that youth and children play in behavioural change and strengthening resilience.

Our plenaries set the scene for each day:

We were reminded that:

- individual and collective self reliance is a precondition of resilience;
- resilience is multidimensional,
- trust and relationships are critical for resilience, and
- tradition and faith build trust and relationships.

We recognised the need for sustained engagement at all levels by all stakeholders individually and collaboratively and especially youth and children, to lead and support behavioural change using relevant approaches and mediums.

We reaffirmed the value of multi stakeholder partnerships that are transformative and deliver innovative, sustainable, effective and resilient development initiatives.

In our sessions, we concentrated our efforts around the four standards or pillars of resilience which are:

1. To integrate policy and practice in addressing climate change and disaster risk. In this, we recognised the challenges in integration but also reaffirmed our commitment to using integrated approaches as these ensure national to community level resilience. This is particularly important during this Covid19 pandemic, which gives us the opportunity to be creative and innovative in preparing for a sustainable and community-focused, post pandemic boom. In this we acknowledged the importance of disaster risk financing as a tool for both addressing national and sub-national disaster response, and in addressing inequality and poverty. To this end we commend the establishment of inclusive, national-level disaster risk finance networks.
2. To include the whole of society with particular emphasis on the needs and rights of those in vulnerable situations including women, youth, children and people living with disabilities. In this, we recognised that community knowledge and action enhances humanitarian response to crises. This was illustrated through our discussions on the complex and intersectional impacts of multiple crises faced by women, particularly women with disabilities, women in rural and

isolated areas and transgender women. Recognising that the Covid19 pandemic has exacerbated pre-existing issues of vulnerability, exposure and risk, we encourage greater action to strengthen diverse women's leadership, including the facilitation of regular, open and frank dialogue to help dismantle biases that prohibit the acceptance of diverse opinions and the equality of all groups. And we looked to the examples of local, women-led gender-responsive and disability-inclusive approaches as a means of strengthening resilience. We acknowledged the barriers faced by persons with disabilities hindering them from becoming active agents for transformation and resilience and emphasized the need for more inclusive approaches particularly in terms of health, safety and protection. We also acknowledged the role of youth in disseminating information using creativity and accessible technology and platforms, and being responders and front-line workers in the Covid19 crisis; recognising that in order for youth to contribute effectively they need access to the space and to support.

3. To inform resilience building through traditional knowledge and practices and the gathering and use of contemporary data. We noted the importance of easily understood, interpreted and communicated early warnings and risk information, in disaster preparation, and ultimately in behavioural change. We acknowledged the resilience building that exists within traditional wisdom and practices, with the view of inspiring the next generation of practitioners to recognise knowledge holders and to document and use those practices. We also discussed using new technology and platforms to analyse big data, to disseminate information in easily accessible and understandable ways and ultimately to build resilience across all sections of society.
4. To sustain resilience building through incorporating ecosystem management, addressing root causes of vulnerability, strengthening preparedness and promoting low carbon development. In this, we reflected on the simultaneous epidemics of Covid19, natural & human induced disasters and climate change affecting our region. We explored further the resilience wisdom and practices provided in Pacific traditional knowledge that have enabled our communities to endure multiple risks and to build back sustainably. We also looked at how this green resilience and emphasis on a people centred approach, has supported communities during Covid19, which in turn provides a 'green print' for the future. Furthermore, we acknowledged the significant efforts to introduce and sustain low carbon development initiatives at national and community level, emphasising that greater levels of resilient and sustainable development could be achieved if we combine low carbon development policies and practices alongside other resilience initiatives, such as those found in nature-based solutions.

PRM 2021 has also had four Learning Labs that provided opportunities for knowledge exchange and network building. These Labs explored disaster data collection, integration practice, climate justice and multi-stakeholder partnerships.

#### CONCLUDING REMARKS

We can all agree that even in these trying times, we have successfully met to share, explore and discuss ideas and best practices in building a resilient Pacific. I thank you for your engaging participation and your continued commitment to our region. I also thank the partners, the speakers and the organising committee for PRM 2021.

With these words, it is my honour to bring the 2nd Pacific Resilience Meeting to a close. May you all continue to be safe in these tough times, remembering that we are a resilient people. Thank you.

Engel Raygadas  
Chair, Pacific Resilience Partnership Taskforce  
Deputy Permanent Secretary for International, European & Pacific Affairs,  
French Polynesia  
8 July 2021

## ANNEX 5: PRM Organising committee list

### MEMBERS

1. Chair: Rhonda Robinson, SPC
2. Anais Rouveyrol, SPC
3. Lisa Kingsberry, SPC
4. Shivanal Kumar, Climate Change Division, Ministry of Economy, Fiji
5. Daniel Lund, Climate Change division, Ministry of Economy, Fiji
6. Jim Armistead, Cook Islands
7. Andy McElroy, UNDRR office for the Pacific
8. Rajeli Nicole, OXFAM Pacific
9. Susan Grey, FemLink Pacific
10. Katie Greenwood, Head office IFRC Pacific
11. Meiapo Faasau, IFRC Pacific
12. Sevuloni ROKOMATU, IFRC Pacific – Youth rep
13. Cedric Hoebreck – Worldvision Australia, HAD
14. Viliamu Iese, USP
15. Emeline Siale Ilolahia, PIANGO
16. Stephen Lion, PIPSO
17. Nilesh Narayan, NDC hub, GIZ
18. Teea Tira, PIFS
19. Moseses Sikivou, PIFS
20. Sione Fulivai, SPREP
21. Vanda Faasoa-Chan Ting, SPREP

### Support

1. Sharon Tohaimae, PIFS
2. Viliame Cativakalakeba, PIFS
3. Exsley Taloiburi, PIFS
4. Karlos Lee Moresi, PIFS
5. Ritesh Verma, PIFS
6. Yo Kunieda, UNDRR office for the Pacific
7. David Baker, UNDRR office for the Pacific





# INCLUDE

**GENDER & DISABILITY**  
 MAKE INFORMATION ACCESSIBLE  
 UNPAID LABOUR is a LARGE CONCERN  
 LOCAL WOMEN DON'T KNOW THEIR RIGHTS  
 DURING LOCKDOWN WOMEN LOST THEIR LIVELIHOOD & HAD TO LOOK AFTER THEIR HOMES  
 COVID HAS SHED LIGHT ON THE INVISIBLE CHALLENGE OF WOMEN  
 YOUNG PEOPLE CAN CONTRIBUTE TO COMMUNITY SAFETY BY WEARING MASKS, STAYING HOME, GETTING VACCINATED

**YOUTH IN THE FACE OF COVID-19**  
 VACCINATION ALONE WILL NOT END THE PANDEMIC  
 VACCINES ARE ONLY EFFECTIVE IF THEY ARE APPLIED ACROSS THE PACIFIC  
 PRESSURE FROM RESTRICTIONS HAS CAUSED YOUNG PEOPLE TO REBEL!  
 SECONDARY IMPACTS: LESS LABOUR, LESS PROTECTION

**GET VACCINATED**  
 WE WOULD NOT BRING IN A VACCINE THAT WAS DANGEROUS  
 IF THE MEN WON'T DO IT THE WOMEN MUST TAKE ACTION  
 BUILD THE CAPACITY OF OUTER ISLANDS  
 TIKTOK CHALLENGE 2021

**EDUCATION AWARENESS & ADVOCACY**  
 STOP THE SPREAD OF MISINFORMATION  
 TRUSTED SOURCES NOT RUMOURS  
 TARGET THE TECH THAT ATTRACTS YOUTH  
 PROMOTION OF ADVOCACY OF VACCINES & SAFE PROTOCOLS

**ACCESS TO COVID-19 INFORMATION**  
 MASKS IMPEDE COMMUNICATION FOR THE HEARING IMPAIRED  
 ACCESS TO INTERPRETERS  
 BUILDING RESILIENCE IN THE YOUNG IS A MATTER OF SURVIVAL  
 SOCIAL MEDIA MAINSTREAM  
 INFORMATION OVERLOAD  
 WORD-OF-MOUTH MISINFORMATION  
 NOTHING

**DECENTRALISED HUBS**  
 PROGRAMME/INITIATIVE  
 LOCALLY-LED COLLABORATION  
 DRIVING FOR CHANGE  
 VISION FOR CHANGE  
 SHARING EDUCATION  
 CONNECTED TO THE FRONTLINE  
 THE CARE OF THOSE WITH DISABILITIES MUST BE CONSIDERED  
 BULA RE!  
 SPEAKS TO TRADITIONAL RESILIENCE "LIFE IS GOOD!"

**SHARED VISION PRINCIPLES VALUES**  
 COVID LEAVES YOUTHS WITH DISABILITY FEELING THE RISK FOR YOUTH WITH DISABILITY IS HIGHER  
 CONFUSED, LOST, NOT KNOWING WHAT TO DO  
 VULNERABLE TO DISASTERS  
 NEED ACCESSIBLE TRANSPORT  
 SHARE THE RESPONSIBILITY AND THE LARGEST PROVIDER OF EDUCATION  
 CHURCHES ARE THE FRONTLINE OF RESILIENCE  
 BUA DID NOT WAIT FOR HELP  
 WHAT CAN WE DO NOW?  
 RELOCATION GUIDELINES  
 SHARING MEALS  
 COMMUNITY EFFORT

**COMMUNITY AT THE HEART OF PLANNING**  
 THERE IS A HESITANCY TO GET VACCINATED  
 SOME TURNING TO HERBAL REMEDIES  
 CRIMES AGAINST WOMEN & CHILDREN AT EVALUATION CENTRES IS A PROBLEM  
 A CODE OF PRACTICE  
 DATA COLLECTION IS IMPORTANT  
 QUESTIONS INTERPRETERS ACCESSIBILITY LOCATION  
 FOOD HEALTH ECONOMIC SECURITY  
 COMMUNITY AT THE HEART OF PLANNING  
 SOCIALLY-LED RESILIENCE  
 WHAT IS AT STAKE?

# INFORM

**RISK COMMUNICATION FOR RESILIENCE**  
 EARLY WARNINGS ARE DIFFICULT IN THE SOLOMON ISLANDS  
 LOCATION  
 LACK OF COMMUNICATION INFRASTRUCTURE  
 WARNINGS NEED TO BE UNDERSTANDABLE  
 PEOPLE ABLE TO NEED TO BE READ & PREPARE  
 WORK WITH NGOs TO HELP IMPROVE EARLY WARNINGS

**ORGANISATIONS NEED TO WORK TOGETHER**  
 KEEP RELATIONSHIPS STRONG  
 KNOWLEDGE GAINED THROUGH EXPERIMENTAL LEARNING ONLY BECOME WISDOM WHEN IT BENEFITS SOCIETY  
 THIS WISDOM IS ETHICAL - IT HAS THE ABILITY TO KNOW WHEN HOW WHY & FOR WHAT PURPOSES WE ACT

**INCLUSION IN PREPERATION**  
 COMMUNITIES DON'T HAVE ACCESS TO PREPARE FOR RISK  
 DURING COVID-19  
 INCREASED AGRICULTURE  
 TRADITIONAL FOOD SYSTEMS BUILT RESISTANCE  
 NATURAL DISASTERS REDUCE CAPACITY TO INCREASE FOOD PRODUCTION  
 INCREASE SUPPORT OF FISHERIES MANAGEMENT

**PRCS**  
 DRIVES THE COLLECTION OF INFORMATION TO ASSIST COMMUNITIES TO PREPARE  
 YOUTH & THOSE WITH DISABILITIES

**VCA TOOL**  
 EDUCATE THE COMMUNITY TO INTERPRET DATA  
 TRAINING FOR POLICE FORCE TO IMPROVE COMMUNICATION WITH THOSE WITH DISABILITIES  
 MESSAGING NEEDS TO BE INCLUSIVE  
 HEARING IMPAIRED LITERACY PSYCHO SOCIAL  
 PREPARATION IS KEY TO MESSAGING  
 USE OF COLOUR LACK OF JARGON USE OF TECHNOLOGY  
 INVEST THE TIME TO TEACH ELDERS - PRACTICES - CHANGE - BUT - THE FOUNDATIONS - STAY THE SAME

**LEVERAGING TECHNOLOGY FOR ALL**  
 SPACE JAMS: CREATED A SPACE FOR ARTISTS TO PERFORM DURING LOCKDOWN NOW MANY INITIATIVES ARE USING THE PLATFORM  
 A SENSE OF BELONGING A WAY TO SHARE MONEY  
 DIGITAL EARTH PACIFIC: MAKING USEFUL PRODUCTS FROM EARTH DATA  
 MONITORING OUR ENVIRONMENT ROUTINELY MONITOR AGRICULTURE  
 PRODUCTS: MAP THE HISTORY OF LOCATIONS  
 REAL TIME, ONLINE/OFFLINE, VISUAL VACCINE DATABASE  
 TUPAIA MAP OF VACCINATION SITES  
 EASY TO USE SO IT BUILDS THE CONFIDENCE OF HEALTHCARE WORKERS  
 MONITOR & TRACK LOCATIONS YOU CAN'T VISIT

**GENDER**  
 WITHOUT THE USE OF THE WORD GENDER  
 VILLAGE LEADERS SUPPORTED WOMEN CONTRIBUTING TO DISCUSSIONS  
 STRENGTHENING LOCAL FOOD PRACTICES IS KEY TO NATURAL RESOURCE MANAGEMENT  
 CAN CAUSE BLOODRIPS  
 WOMEN IN THESE COMMUNITIES CONDUCTED MANGROVE CRAB STUDIES FOR THE FIRST TIME  
 DOCUMENT ALL THE TRADITIONAL KNOWLEDGE FROM FUNERAL PROTECTED AREAS  
 RECOLONISE THE MINDS  
 RELEARN TRADITIONAL KNOWLEDGE, WISDOM & SKILL  
 DIGITISE THE KNOWLEDGE INTO SCHOOLS







**YOUTH**



